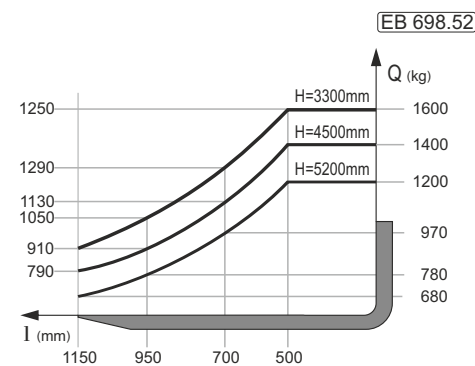
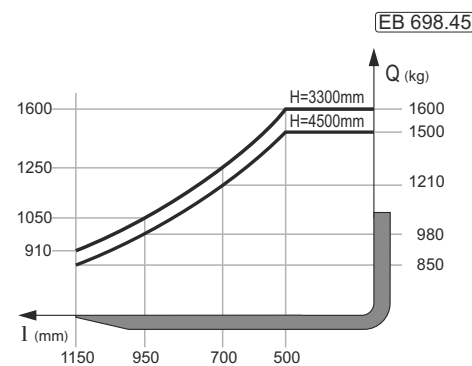
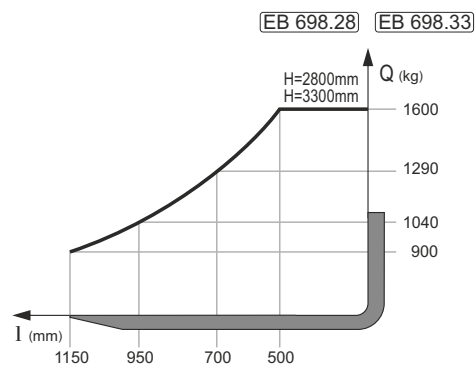


E16



TECHNICAL CHARACTERISTICS

Main characteristics	1	Manufacturer	„ITM-Product“					
	2	Type	Manufact. designation					
	3	Load capacity	kg	E 16		E 16		
	4	From the center of the load	C - distance to the back of the fork	mm	500		500	
	5	Power unit	Electrical (storage battery); engine (diesel, petrol, gas)	Electrical (battery)		Electrical (battery)		
	6	Steering system	Pedestrian, seated, stand-on	seated operator		seated operator		
	7	Tyres	V-solid, L - pneumatic, SE - cushion; front / rear	L L		L L		
	8	Wheels (x - drive)	number of front / rear	шт.	2x 2	2x 2		
	9	Lifting mast	h3 - maximum lifting height	mm	2800		3300	
	10		h2 - nominal free lift	mm	-		70	
	11		h5 - special free lift	mm	1360			
	12	Carriage	to ISO 2328-93					
	13	Fork arm	s - thickness / b - width / l - length	mm	40x100x1150		40x100x1150	
	Dimensions	14	Mast tilt	forward / backward	°	4°30'		4°30'
15		Overall dimensions	L2 - length including fork heel	mm	1950		1950	
16			B - width	mm	995		995	
17			h1 - height, mast lowered	mm	1920		2200	
18			h4 - height, mast raised	mm	3370		3900	
19			h6 - height of overhead guard	mm	2150		2150	
20			h7 - height of seat	mm	1045		1045	
21		Turning radius	Wa - outer turning radius	mm	1750		1750	
22		Forward overhand	x - from front axle axis to fork heel	mm	332		337	
23		Working aisle width	Ast4 - for 800x1000 mm / 1000x1200 mm pallets	mm	3432		3437	
Performance	24	Speed	travel laden / unladen	km/h	13 15	13 15		
	25		lifting laden / unladen	m/s	0,26 0,32	0,26 0,32		
	26		lowering laden / unladen	m/s	0,60 0,32	0,60 0,32		
	27	Tractive effort	rated drawbar pull	kN	1,7		1,7	
	28		max drawbar pull at mode S2 - 5 min	kN	4		4	
	29	Overcoming slope	laden / unladen at mode S2 - 30 min	%	8		8	
			laden / unladen at mode S2 - 5 min	%	10 14		10 14	
Weight	30	Max slope	laden / unladen at mode S2 - 1 min	max %	20 24		20 24	
	32	Dead load	including battery - ISO 5053-87	kg	3050		3050	
	33	Axle loading	max laden, front / rear	kg	4150 max 450 min		4150 max 450 min	
	34		unladen, front / rear	kg	1450 min 1600 max		1450 min 1600 max	
Chassis	35	Tyres	number, front / rear	шт.	2 2		2 2	
	36		tyre size, front		18x7-8		18x7-8	
	37		tyre size, rear		16x6-8		16x6-8	
	38	Wheelbase	y	mm	1400		1400	
	39	Track	center of tyre, front / rear	mm	826 780		826 780	
	40	Ground clearance	laden, m1 - at lowest point (under mast)	mm	80		80	
	41		m2 - at wheelbase center	mm	105		105	
	42	Service brakes	foot (mech., hydr., electr., pneum., comb.)		hydraulic		hydraulic	
	43	Parking brake	hand, foot (mech., mech. w/electr.)		handbrake / mech.		handbrake / mech.	
	Drive	44	Storage battery	type		clad plate		clad plate
45			voltage / capacity (at 5-hour discharge)	V / Ah	48 / 500-600		48 / 480	
46			weight	kg	853 1130		853	
47		Electric motors	traction / capacity at mode S2 = 60 min AC	kW	8		8	
48			auxiliary / capacity at S4 - 25% at 240 switchings/h AC	kW	10		10	
54		Speed control	type - stages		electronic / stepless		electronic / stepless	
55		Transmission	type - speeds forward / reverse		mechanical		mechanical	
57		Rated operating pressure	for hydraulic attachments	MPa	12		12	
58		Noise level	admissible equivalent level	dB	7072		7072	